

IHAS 5000

Bendix/King®
Integrated Hazard
Avoidance System



General Aviation's First Integrated Safety System



TRAFFIC



WEATHER



TERRAIN



MOVING
MAPS

THE KMD 550 MULTI-FUNCTION DISPLAY

With its advanced KMD 550 Multi-Function Display (MFD), the IHAS 5000 lets you spend less time looking at instruments and more time flying your aircraft. Presenting a range of safety information on a razor-sharp display, the system gives you the information you need without added clutter, all while reducing the time required to manage each safety system.

angle and a pilot-friendly operating system, along with the capability of displaying traffic, weather, terrain and moving map information. Advanced features include such innovations as an NTSC-compatible video input port, data link compatibility and the ability to simultaneously overlay different sensors. And the KMD 550 is designed to fit a wide range of aircraft types from piston singles to light jets.

The KMD 550 also offers the benefits of sunlight readability, a wide viewing

ADVANCED POWER KEY TECHNOLOGY

BRIGHT, RAZOR-SHARP DISPLAY

DATA LINK WEATHER CAPABILITY

UNIQUE ARCHITECTURE FOR VIRTUALLY UNLIMITED GROWTH

OVERLAY CAPABILITY

INSTANT SWITCHING BETWEEN MAP, WEATHER, TRAFFIC AND TERRAIN DISPLAY



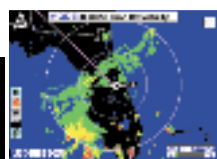
POWERFUL FEATURES

With its extensive aeronautical and cartographic database, the KMD 550 presents a wealth of reference information, from airports, NDBs, intersections, VORs, special-use airspace, victor airways, rivers, roads, lakes and cities, to railroad tracks and towers (U.S. and Europe only). Its mark-width form factor makes it an ideal supplement to your current GPS or Loran, including our KLN 89B, KLN 90B, KLN 900 and KLN 94 GPS receivers. When interfaced to our new KLN 94, the KMD 550 can also display holding patterns, procedure turns and DME arcs for even greater situational awareness.

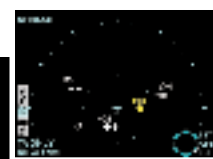
The KMD 550 is equipped with a GPS interface, a Stormscope® interface and an NTSC video input. Complementing the KMD 550's high-resolution screen, our unique Power Key® controls mirror the function and reliability of dedicated buttons, while offering the flexibility of programmable 'soft' keys. This innovation gives your KMD 550 an unprecedented degree of pilot-friendliness and usability, and lets you take full advantage of your moving map capability.



MOVING MAPS



DATA LINK WEATHER



TRAFFIC



TERRAIN

AN INTEGRATED SYSTEM

A pioneer in the development of such safety systems as weather radar, TCAS II/ACAS II and Enhanced Ground Proximity Warning Systems (EGPWS), Honeywell is the acknowledged leader in safety systems for air transport and corporate aircraft. And drawing from this experience, Honeywell engineers have now been able to bring a new level of safety to General Aviation.

Even better, these capabilities have been brought together in a single compact, lightweight system — our new Integrated Hazard Avoidance System (IHAS) 5000 — to give you the most wide-ranging situational awareness and safety package ever offered for General Aviation.

THE SAFE CHOICE

A truly integrated system, the IHAS 5000 presents position, data link weather and lightning information while prioritizing the traffic advisory (TAS) and terrain avoidance (GA-EGPWS) data shown on your display. In addition, the KMD 550's overlay key allows you to selectively display flight plan, data link weather, lightning and traffic information in a variety of combinations. This means you can fly with the confidence that you'll have a complete, up-to-the-second picture of your flight situation. The base system comprises the KMD 550 MFD, the KDR 510 VDL Mode 2 Data Link Receiver and the KT 73 Mode S Transponder.

TRAFFIC

Providing an economical means of traffic avoidance, the KT 73 Mode S Transponder receives traffic information from Air Traffic Control via the transponder data link, and displays this information using TCAS symbology on the KMD 550 display. This gives the pilot an enhanced "see and avoid" capability that greatly improves situational awareness.



THE RIGHT CAPABILITIES

Put simply, our exclusive IHAS 5000 is an advanced interactive system that integrates the four major airborne safety systems — position awareness, weather avoidance, traffic advisories and terrain warning — to present you with a wealth of situational awareness and safety information. As the only manufacturer that designs and builds all four of these safety systems, we've designed the IHAS 5000 to smoothly integrate — and even prioritize — all these functions in a single system, and present them on a single Multi-Function Display.

Thus, the IHAS 5000 offers an unmatched combination of flexibility, capability, and affordability.

REAL WEATHER RIGHT NOW

The KDR 510 VDL Mode 2 Data Link Receiver provides ground-based weather information (such as NEXRAD, METARs, TAFs and PIREPs) via data link to the KMD 550 display. The KDR 510 is a high-speed digital radio that receives high-resolution broadcast weather information through the Bendix/King Data Link Weather network. This network will comprise over 200 sites that continuously broadcast text and graphical weather throughout the United States. Weather updates automatically, and NEXRAD radar information is in 4 km by 4 km resolution nationwide, regardless of your position. Subscriptions are available through Wingman™ Services. Text services are free with the use of the KDR 510.



A RANGE OF CHOICES

Although it's a fully integrated system, the IHAS 5000 can also interface to a range of different sensor types, enabling it to meet your specific mission and equipment needs. This design flexibility gives you an unprecedented degree of capability and upgradability, providing you with a wide range of choices while protecting your investment.

The IHAS 5000 provides the flexibility to display a range of situational awareness products, including the KGP 560 GA-EGPWS, the KTA 870 Traffic Advisory System and the sensors listed at right.

TERRAIN

The KGP 560 General Aviation Enhanced Ground Proximity Warning System, derived from the industry-leading airline EGPWS, protects against Controlled Flight Into Terrain (CFIT). The Advanced Runway Clearance Floor (RFCF) feature provides 360-degree protection against premature descent during landings and near-airport operations. The KGP 560 combines a timely alert/warning capability with a terrain display output to enhance safety by improving situational awareness. The KGP 560 complies with TSO C151a Class B for TAWS (Terrain Awareness and Warning Systems.)



TRAFFIC

Traffic advisories are provided by either the KTA 870 Traffic Advisory System or the KMH 880 Multi-Hazard Awareness System (combining TAS and GA-EGPWS functionality in one unit). The systems track up to 60 aircraft and display up to 30. The KTA 870 and KMH 880 actively interrogate intruder aircrafts' transponders to present their relative position and altitude. Both units utilize dual directional antennas, one each on the top and bottom of the aircraft, to virtually eliminate "blind" spots caused by own-aircraft shadowing, common with other systems.



ROOM TO GROW

The IHAS 5000's KMD 550 is a miracle of open-ended design architecture. To ensure virtually limitless growth capability, our engineers developed a unique distributed processor system, with each modular card in the system driven by its own processor. Providing added redundancy, this approach also speeds the presentation of information, eliminating lag time and assuring that the information you see is the most accurate and current available — now and in the future.

A WORD ABOUT SUPPORT

Like our other avionics, the IHAS 5000 is backed by our comprehensive Bendix/King two-year "no hassle" warranty. And wherever you fly, you'll never be far from one of our 800 authorized sales and service centers worldwide — the most extensive and capable network in General Aviation.

A WORLD OF SITUATIONAL AWARENESS

Now you can have it all.

It's possible — you can have all the situational awareness available to ensure safe flying. Combine the KMD 550, the KDR 510 and the KMH 880 Multi-Hazard Awareness System to completely equip your aircraft for a comprehensive safety picture. The KMH 880 combines the functionality of the KTA 870 TAS

and the KGP 560 GA-EGPWS for efficient weight, space and cost savings. The IHAS 8000 meets the situational awareness needs of radar-equipped aircraft.



COMPATIBLE SENSORS

WEATHER:

- KDR 510
- Goodrich WX-500 Stormscope®

TRAFFIC:

- KTA 870/970
- KMH 880/980
- KT 73
- TCAS I
- TCAS II
- Goodrich SkyWatch®
- Goodrich SkyWatch® HP

TERRAIN:

- KMH 880/980
- KGP 560 GA-EGPWS
- Mark VI, VIII EGPWS
- Mark XXI, XXII EGPWS

POSITION:

- KLN 88 LORAN
- KLN 89/89B GPS
- KLN 90/90A/90B GPS
- KLN 94 GPS
- KLN 900 GPS
- Most Others (see your authorized sales & service center for details)

OTHER:

- NTSC-compatible video

IHAS 5000 SPECIFICATIONS

KMD 550 MULTI-FUNCTION DISPLAY

Width:	6.2 in. (15.8 cm)
Height:	4.0 in. (10.1 cm)
Depth:	9.8 in. (25.4 cm)
Weight:	6.4 lbs. (2.8 kg) max with rack
Screen Size:	5.0 in. (12.7 cm) diagonal
Temperature Range:	-20°C to +70°C
Altitude:	35,000 ft.
Cooling:	No external cooling required
Power Input:	10-33VDC (20W nominal, 40W maximum)
Lighting Power:	+28 VDC or +14 VDC or + 5 VDC or 5 VAC
Mounting:	Panel-mounted
Certification:	FAA TSO C113 TSO C110a (Airborne Passive Thunderstorm Detection Equipment)
Environmental Standard:	DO 160D (A2C1)VBABSXXXXXXZBA(BZ)A(RRR)M(A3E3)XXA

KMH 880 INTEGRATED TRAFFIC AND TERRAIN SENSOR

Width:	4.5 in. (11.4 cm)
Height:	7.0 in. (17.8 cm)
Depth:	13.8 in. (35.1 cm)
Weight:	9.68 lbs. (4.39 kg)
Temperature Range:	-55°C to +70°C
Power Input:	22-30 VDC
Certification:	FAA TSO C147 Class A and C151a Class B
Altitude:	51,500 ft. unpressurized

KA 815 DIRECTIONAL ANTENNA

Width:	3.5 in. (8.9 cm)
Height:	2.7 in. (6.9 cm)
Depth:	5.95 in. (15.1 cm)
Weight:	.95 lb. (.43 kg)

KDR 510 VDL MODE 2 DATA LINK RECEIVER

Width:	1.66 in. (4.22 cm)
Height:	4.63 in. (11.75 cm)
Depth:	9.05 in. (22.99 cm)
Weight:	1.9 lbs. (.86 kg)
Power Input:	10-32.2 VDC
TSO:	C113
Temperature Range:	-40°C to +70°C
Altitude:	50,000 ft.

KGP 560 GA-EGPWS

Width:	2.20 in. (5.59 cm)
Height:	4.15 in. (10.54 cm)
Depth:	6.25 in. (15.88 cm)
Weight:	1.5 lbs. (.68 kg)
Power Input:	10-32 VDC
TSO:	C151a Class B
Inputs:	Pressure Altitude Power Outside Air Temperature (optional)
Outputs:	Display Annunciators
Temperature Range:	-40°C to +55°C
Altitude:	55,000 ft.

Honeywell

23500 W. 105th Street, Olathe, KS 66061-1950
Telephone 913.712.2613 Fax 913.712.5697
Toll-Free in U.S. 877.712.2386
www.bendixking.com
bendix.king@honeywell.com