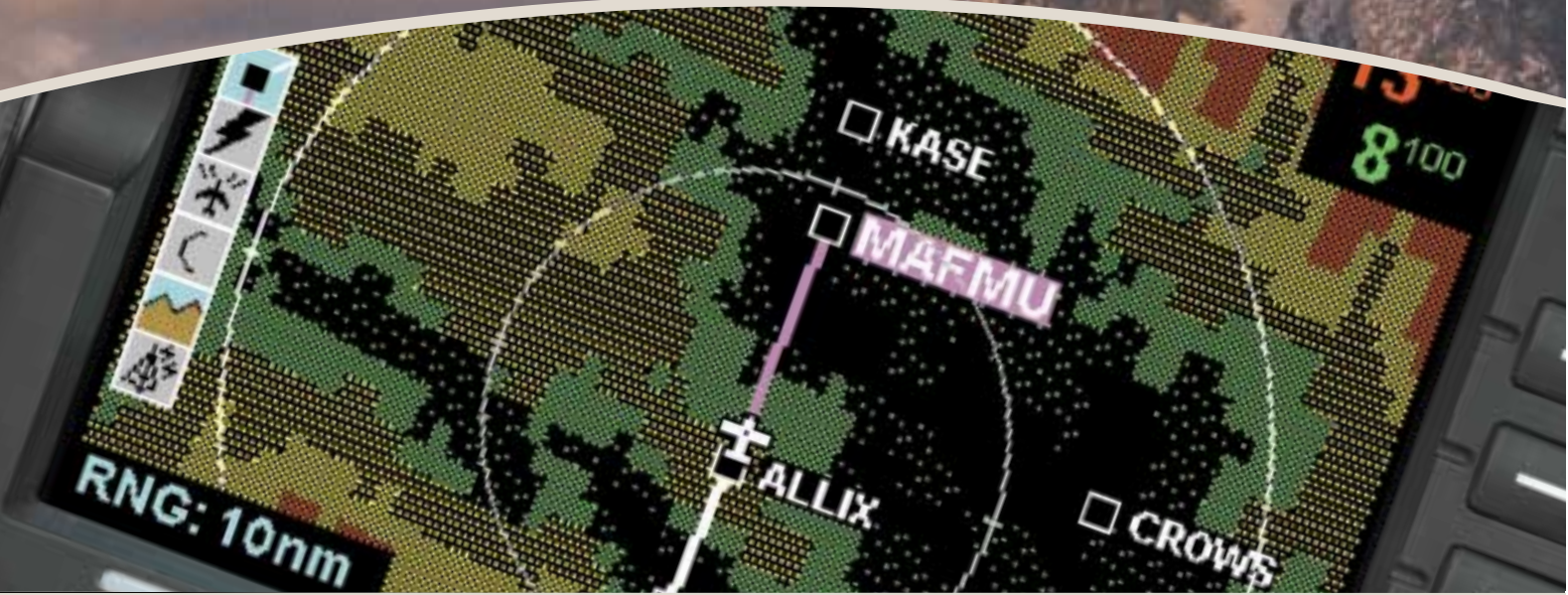


KGP 560 Enhanced Ground Proximity Warning System for General Aviation



SEAMLESS SAFETY INTEGRATION THROUGH IHAS

BENDIX/KING®
EQUIPPED WITH CONFIDENCE.



Depicted here on the KMD 850 Multi-Function Display

THE HAZARD OF CFIT

CFIT is one of the leading causes of General Aviation fatalities. According to the National Transportation Safety Board, nearly 30% of all U.S. general aviation accidents over the last 10 years – and 60% of all fatalities in public air transportation – were the result of CFIT. It's why the FAA has called for all new turbine aircraft with six or more passenger seats in Part 91 (non-revenue) operations to be equipped with a Terrain Awareness and Warning System (TAWS), and why the FAA has long required large turboprops and jets (Part 121 and 135) flying in the U.S. to be equipped with a Ground Proximity Warning System (GPWS).

THE STANDARD IN TERRAIN AVOIDANCE

Incorporating much of the technology found in Honeywell's EGPWS for air transport aircraft, the KGP 560 GA-EGPWS was developed specifically to protect light turbine and piston aircraft.

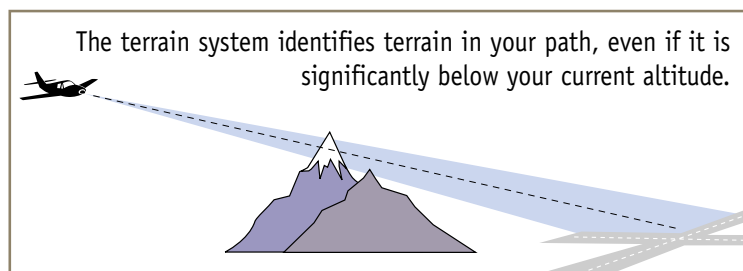
The KGP 560 accomplishes safety protection by combining an early alert/warning capability with an optional terrain display, to enhance safety as it improves situational awareness. Moreover,

Enhanced Terrain System

In a flight environment that demands an ever-increasing amount of attention, pilots have to develop a higher level of situational awareness. That's why we've developed the Bendix/King KGP 560 Enhanced Ground Proximity Warning System for General Aviation (GA-EGPWS), a system that incorporates GPS position and a terrain/obstacle database to give you a clear picture of the terrain ahead of and below your aircraft, anywhere in the world. Offering a unique combination of look-ahead algorithms, comprehensive terrain and obstacle database, and multi-level alerting capability, our GA-EGPWS provides enhanced situational awareness and the most advanced protection available against CFIT – Controlled Flight Into Terrain.

by using derivatives of the algorithms currently in service with the air transport fleet, the KGP 560 virtually eliminates nuisance warnings. Terrain information can be presented on the KMD 550 or 850 Multi-Function Display, a weather indicator or a dedicated display.

The KGP 560 supports a range of functions, including look-ahead algorithms, alerting for premature descent, alerting for negative climb or descent after takeoff, alerting for excessive rate of descent, and 500-foot callout and alerting within 5 nm of public runways greater than 2,000 feet in length.



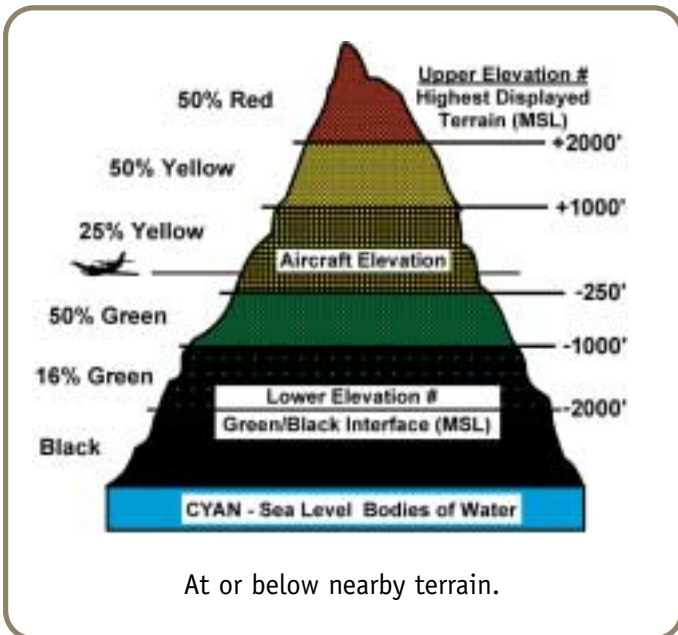
The terrain system identifies terrain in your path, even if it is significantly below your current altitude.

ADDED VALUE

In addition to meeting – and in many cases, exceeding – the TSO-specified operating parameters, the KGP 560 offers useful capabilities not found on other systems.

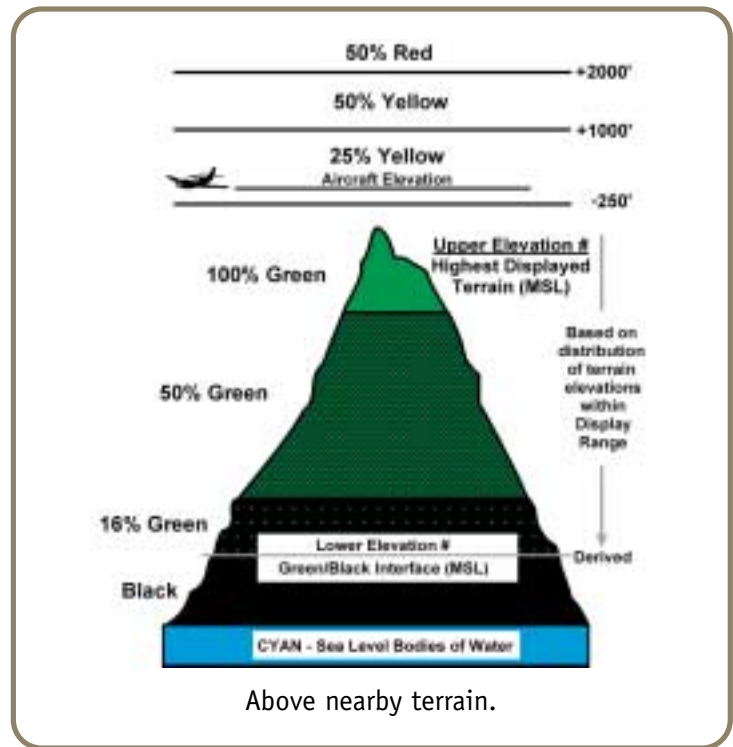
For example, the KGP 560 features our ‘Peaks’ mode that provides additional information about the terrain below your aircraft in a digital format. It also shows this information pictorially, by varying the color and intensity of the screen display according to the elevations of the highest and lowest displayed terrain.

Terrain is represented by different colors, adjusting as your aircraft altitude changes. Terrain can be shown ranging from 2.5 nm to 320 nm and viewed at 360° or a 120° forward-looking view.



At or below nearby terrain.

Another Honeywell exclusive feature is our Geometric Altitude computation. Based on GPS altitude, this function cross-references your altimeter reading and eliminates altitude errors resulting from temperature extremes, non-standard pressure conditions and altimeter mis-sets – the latter accounting for 25% of all CFIT accidents. If the KGP 560 detects a discrepancy in altitude, a “check altitude” alert is issued.



Above nearby terrain.

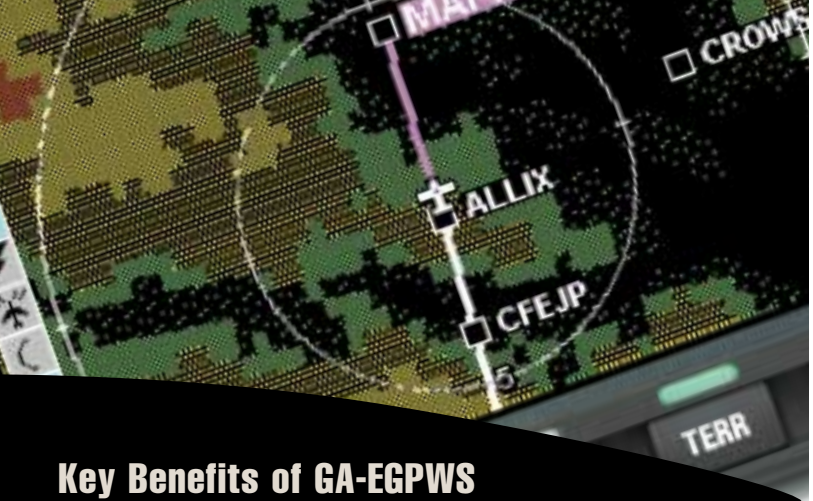
To offer further protection against premature descent during landings and operations near airports, the KGP 560 incorporates the Runway Field Clearance Floor (RFCF) feature. Providing 360° coverage of terrain and obstacles within 5 nm of public runways of more than 2,000 feet, RFCF protects against premature descent during landing as it eliminates nuisance alerts.

Other key benefits found only in the KGP 560 include our sophisticated look-ahead algorithms – derived from our extensive air transport experience, and a built-in GPS receiver – which eliminates the need for an external GPS source

COMPACT PROTECTION

A compact, single-box system, the KGP 560 weighs less than 1.5 pounds, including its built-in GPS receiver. Requiring minimal input – just pressure altitude and power – the KGP 560 is easy to install. Offering coverage for anywhere you fly, the KGP 560’s regional data cards can be replaced in the field, simplifying maintenance.

In short, with its unprecedented combination of advanced capability, database accuracy, simplicity, practicality, compact size and light weight, the KGP 560 provides the situational awareness and protection you need in an affordable package.



Key Benefits of GA-EGPWS

- CFIT protection in a compact package
- Exceeds TSO C151a Class B requirements
- Updateable worldwide terrain database
- Easy to install
- Up to 320 nm display capability
- Built-in GPS receiver (also interfaces to GPS units)
- Available six-color terrain alerting and display output
- EFIS 40/50 interface
- Minimal sensor inputs
- Look-ahead algorithms
- Advanced Runway Field Clearance Floor (RFCF) feature
- Exclusive “Peaks” mode displays terrain below the aircraft

DATABASE ADVANTAGE

While our advanced look-ahead algorithms offer unmatched protection, the KGP 560 also benefits from the sophistication and high degree of capability that comes with Honeywell's worldwide proprietary Terrain, Obstacle and Airport database.

We've dedicated more than 10 years in the development and validation of our database, making it the most comprehensive terrain database in the industry. This effort is further augmented by our strict configuration management and Accuracy Validation Procedures, which ensure the accuracy and reliability of all of our information. Thus, the KGP 560 derives a full measure of benefit from our tremendous air transport operational experience, both in terms of the completeness and accuracy of the database.



IHAS 8000

The IHAS Connection

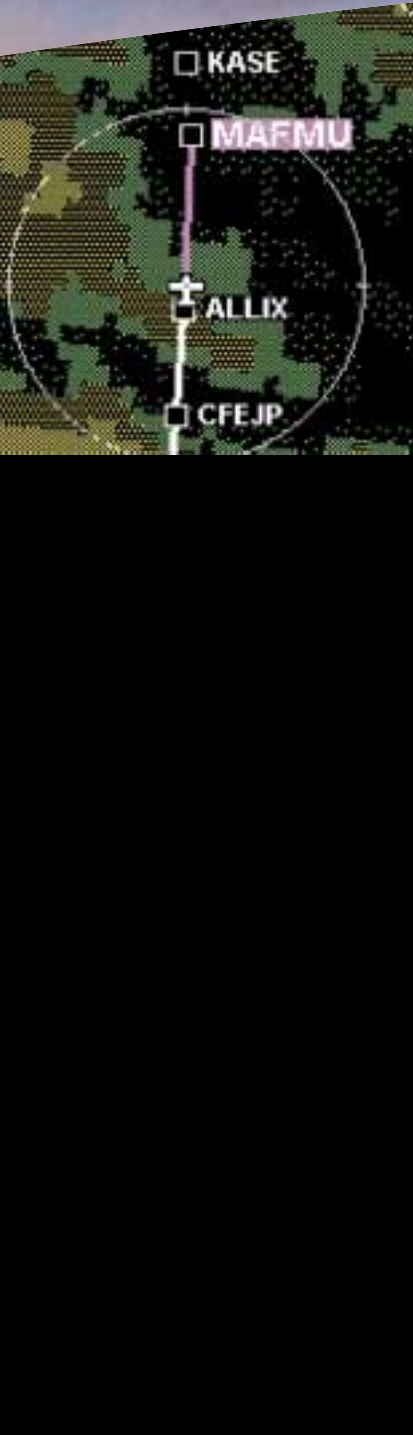
As revolutionary as it is by itself, the KGP 560 GA-EGPWS offers even greater capability as an element of the Integrated Hazard Avoidance System (IHAS).

The KGP 560 GA-EGPWS is available as a part of IHAS 5000 (*for non-radar-equipped aircraft*) or IHAS 8000 (*for radar-equipped aircraft*). These systems integrate the four major airborne safety systems: positioning, weather avoidance, traffic advisories and terrain warning – one easy-to-read Multi-Function Display.

IHAS is simply the most comprehensive safety and situational awareness system ever offered to General Aviation.



IHAS 5000



A WORD ABOUT SUPPORT

Like our other avionics, the KGP 560 is backed by our comprehensive Bendix/King two-year “no hassle” warranty. And wherever you fly, you’ll never be far from one of our 800 authorized sales and service centers worldwide – the most extensive and capable network in general aviation.

KGP 560 ENHANCED GROUND PROXIMITY WARNING SYSTEM FOR GENERAL AVIATION

| | |
|---------------------------|---|
| Width: |2.2 in. (5.59 cm) |
| Height: |4.15 in. (10.54 cm) |
| Depth: |6.25 in. (15.88 cm) |
| Weight: |1.5 lbs. (.68 kg) |
| Temperature Range: |-40°C to +55°C |
| Power Input: |10-32 VDC |
| Certification: |FAA TSO C147 Class A and C151a Class B |
| TSO: |Pressure Altitude |
| |Power |
| |Outside Air Temperature (optional) |
| Outputs: |Display Annunciators |
| |Aural Warnings |
| Altitude: |55,000 ft. |

©2002 Honeywell International Inc.
05/02 006-18249-0001 10K Printed in USA

Policy Notice: Avionics installations require special skills, tools and test equipment. Our limited warranty is valid only for equipment installed in accordance with our sales and service policies.

In keeping with our policy of continual product improvement, designs and specifications may be altered without notice.

Honeywell
23500 W. 105th Street, Olathe, KS 66061-1950
Telephone 913.712.2613 Fax 913.712.5697
Toll-Free in U.S. 877.712.2386
www.bendixking.com
bendix.king@honeywell.com

BENDIX/KING®
EQUIPPED WITH CONFIDENCE.