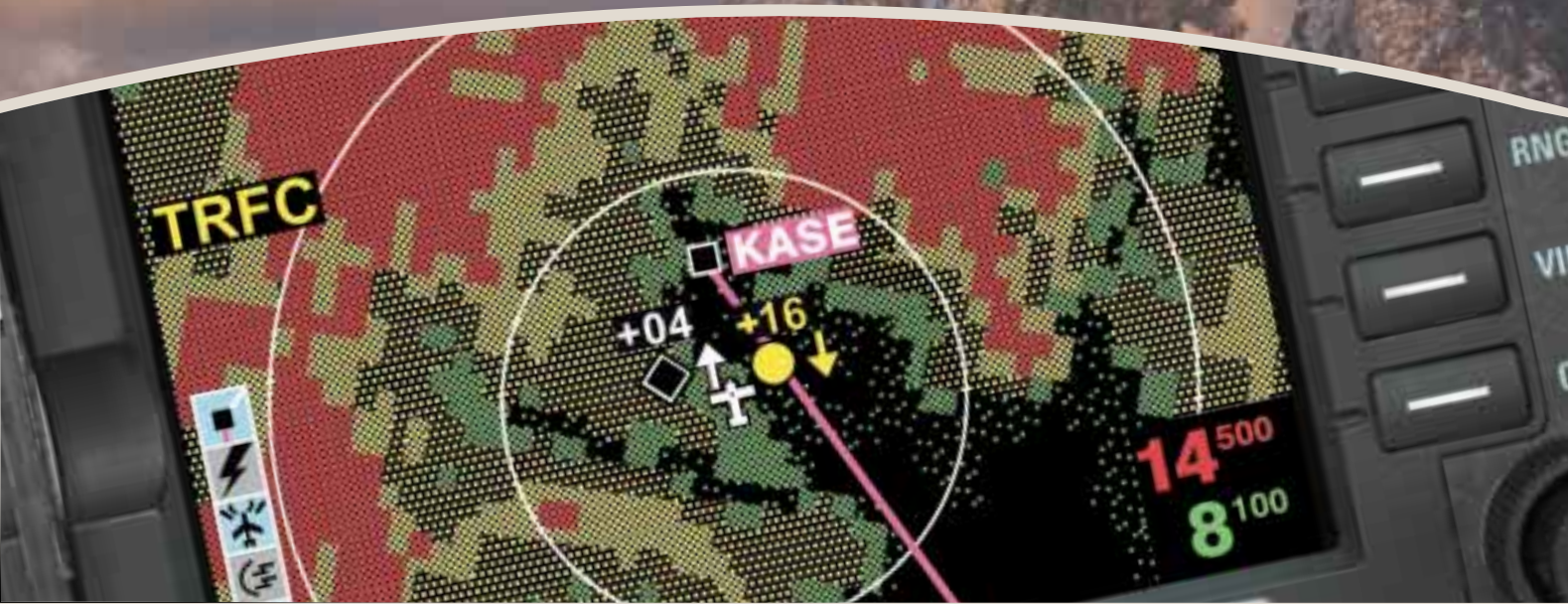


KTA 870  
Traffic Advisory System

KMH 880  
Multi-Hazard Awareness System



**SEAMLESS SAFETY INTEGRATION THROUGH IHAS**

**BENDIX/KING®**  
EQUIPPED WITH CONFIDENCE.

# KTA 870 Traffic Advisory System KMH 880 Multi-Hazard Awareness System



Shown here displayed on a KMD 850 Multi-Function Display

## ACTIVELY INTERROGATE

The KTA 870 and KMH 880 act as your personal Air Traffic Control in the sky, actively interrogating transponders for positioning, distance, speed, and altitude of other aircraft in your area. Using TCAS logic, the KTA 870 and KMH 880 will display and warn of other transponder-equipped traffic that pose a potential threat — automatically — so you can spend your time flying, especially during high workload times like on approach.

## DISPLAY TCAS-STYLE

The Bendix/King KTA 870 and KMH 880 systems display on most EFIS and multi-function displays, including the versatile and affordable Bendix/King KMD 550/850 Multi-Function Display. Traffic displays eight different ranges, from 2 nm to 40 nm. The full-color system shows up to 30 targets and tracks up to 60. The systems illustrate three levels of threat.

## TRAFFIC SYMBOLS

Bendix/King utilizes industry standard TCAS symbology. The number shows the hundreds of feet the aircraft is above (+) or below (-) your aircraft. An arrow will appear, facing either up or down, if the aircraft is climbing or descending at a rate 500 feet per minute or greater.

## *Safety Through Advanced Technology*

**W**ith the new Bendix/King KTA 870 Traffic Advisory System (TAS) and KMH 880 Multi-Hazard Awareness System, Honeywell brings the benefits of airline technology to General Aviation. Both the KTA 870 and the KMH 880 meet FAA TSO C147 for Traffic Advisory Systems. The KMH 880 adds a Class B Terrain Awareness and Warning System (TAWS) for the most cost effective traffic and terrain protection available. These advanced safety systems, controlled and displayed by the KMD 550 and KMD 850 Multi-Function Displays, bring GA pilots an unprecedented level of safety.

### *Non-Threat Traffic*

At a relative altitude more than  $\pm 1,200$  feet or at a range over 5 nm, an open white diamond indicates that the intruder is not yet considered a threat.



### *Proximity Intruder Traffic*

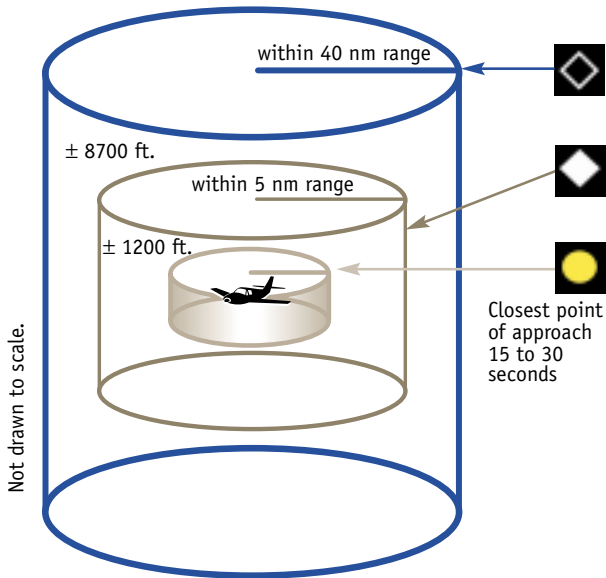
An intruder within  $\pm 1,200$  feet relative altitude and/or at a range under 5 nm is displayed as a filled white diamond if not considered a threat.



### *Traffic Advisory (TA)*

An aircraft's symbol changes to a filled yellow circle when the system determines a potential conflict with another aircraft. Depending on your own altitude, the system will display a TA when time to Closest Point of Approach (CPA) is within 30 seconds. On the KMD 550 and KMD 850 displays, an audible warning will sound and the screen can be configured to automatically switch from the active screen to the traffic screen.





## INCREASE RANGE

The KTA 870 and KMH 880 benefit from flexible display volumes. The systems display aircraft up to 8,700 feet above or below your aircraft. On takeoff, you can select the “above” view, and the system will display traffic 8,700 above and 2,700 feet below to concentrate on the space above you; on approach, you can select “below” and the system will display traffic 2,700 feet above and 8,700 below. Enroute, a “normal” selection will track aircraft 2,700 feet above or below your aircraft.

The KTA 870 and KMH 880 feature two directional antennas, each weighing less than a pound and taking up a third the space of traditional TCAS antennas. The directional antennas, one placed on top of your aircraft, the other on the bottom, minimize own-aircraft shadowing and maximize range. A bottom omni directional antenna is also available for aircraft with fixed gear.

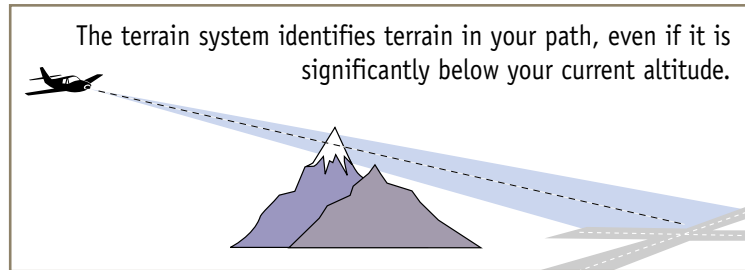
## INTEGRATE TERRAIN



The KMH 880 Multi-Hazard Awareness System combines all of the benefits of TAS with all of the features of the KGP 560 Enhanced Ground Proximity Warning System (EGPWS).

Incorporating much of the same terrain database technology found in our air transport

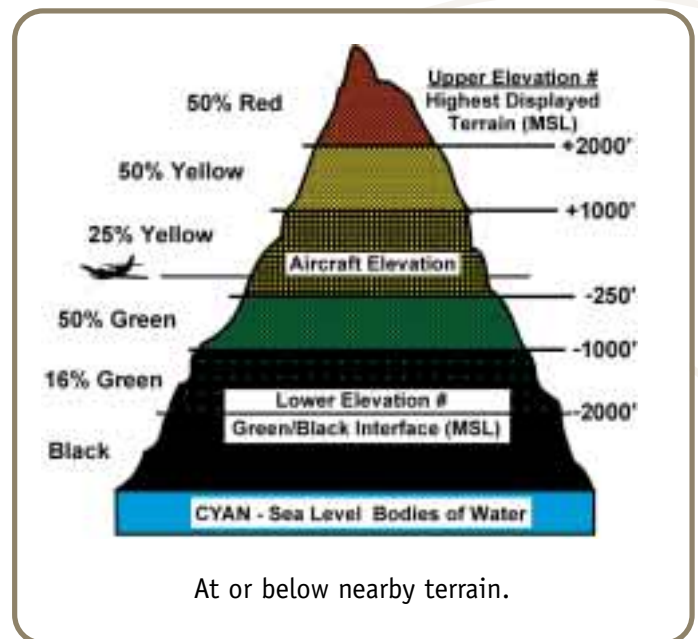
EGPWS, our GA-EGPWS was specifically developed to protect light turbine and piston aircraft from the threat of Controlled Flight Into Terrain (CFIT). Based on Honeywell’s proven CFIT alerting algorithms, our EGPWS provides advanced alerting while virtually eliminating nuisance warnings.

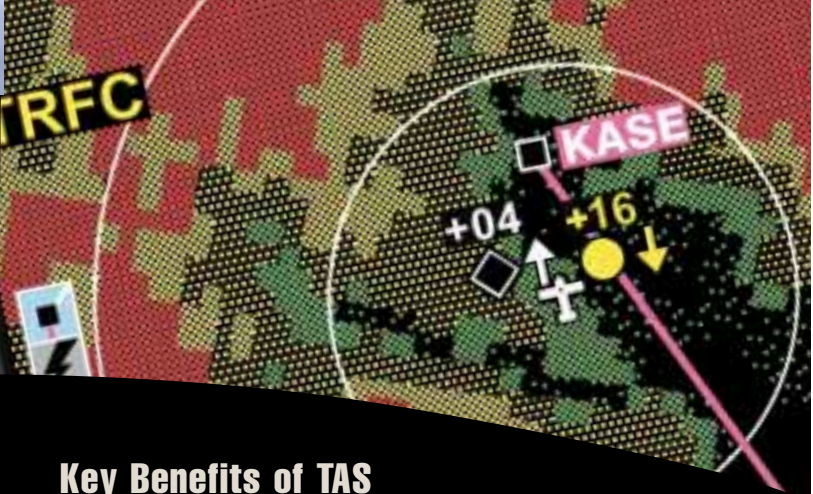


## CHECK OUT THE LANDSCAPE

CFIT is one of the leading causes of General Aviation fatalities. In addition to being TSO'd to C151 Class B TAWS requirements, the KMH 880 provides worldwide terrain database coverage, broken down into three regions — Americas, Pacific or Atlantic. The terrain display depicts terrain ahead of the aircraft, MSL altitude, Magnetic Track, Range in nm, and the elevations of the highest and lowest terrain features shown on the display.

Terrain is represented by different colors, adjusting as your aircraft altitude changes. Terrain can be shown ranging from 2.5 nm to 320 nm and viewed at 360° or a 120° forward-looking view.



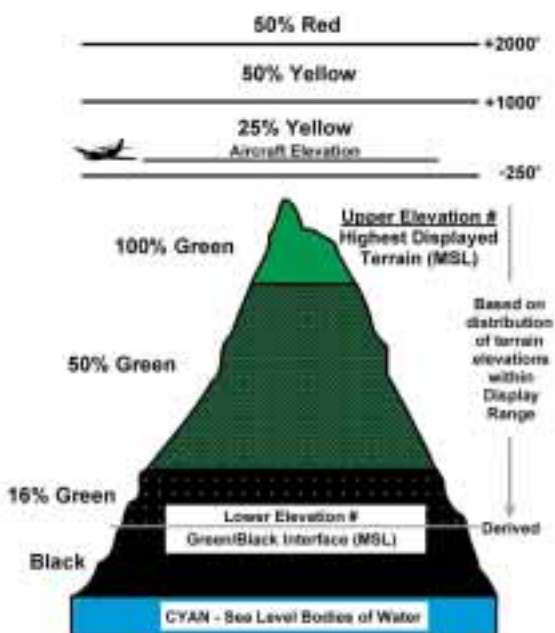


## Key Benefits of TAS

- Active interrogation
- Displays traffic up to 40 nm
- Tracks up to 60 targets
- Displays up to 30 targets
- Displays 8 ranges from 2 nm to 40 nm
- Antenna weighs less than a pound
- 1200-knot closure rate
- Up to 10,000 feet per minute vertical track rate

## Key Benefits of EGPWS

- CFIT protection in a compact package
- Meets TSO-C151 Class B requirements
- Worldwide terrain database coverage



Above nearby terrain.



*IHAS 8000*

## *The IHAS Connection*

As revolutionary as the KTA 870 and KMH 880 are by themselves, they offer even greater capability as an element of the Integrated Hazard Avoidance System (IHAS.)

Either system is available as part of IHAS 5000 (*for non-radar-equipped aircraft*) or IHAS 8000 (*for radar-equipped aircraft.*) These systems integrate the four major airborne safety systems: positioning, weather avoidance, traffic advisories and terrain warning — on one easy-to-read Multi-Function Display.

IHAS is simply the most comprehensive safety and situational awareness system ever offered to General Aviation.



*IHAS 5000*



## KMH 880 MULTI-HAZARD AWARENESS SYSTEM

**Width:** .....4.5 in. (11.4 cm)  
**Height:** .....7.0 in. (17.8 cm)  
**Depth:** .....13.8 in. (35.1 cm)  
**Weight:** .....9.68 lbs. (4.39 kg)  
**Temperature Range:** .....-55°C to +70°C  
**Power Input:** .....22-30 VDC  
**Certification:** .....FAA TSO C147 Class A and C151a Class B  
**Altitude:** .....51,500 ft

## KTA 870 TRAFFIC ADVISORY SYSTEM

**Width:** .....4.5 in. (11.4 cm)  
**Height:** .....7.0 in. (17.8 cm)  
**Depth:** .....13.8 in. (35.1 cm)  
**Weight:** .....8.75 lbs. (3.97 kg)  
**Temperature Range:** .....-55°C to +70°C  
**Power Input:** .....22-30 VDC  
**Certification:** .....FAA TSO C147 Class A  
**Altitude:** .....51,500 ft

## KA 815 DIRECTIONAL ANTENNA

**Width:** .....3.5 in. (8.9 cm)  
**Height:** .....2.7 in. (6.9 cm)  
**Depth:** .....5.95 in. (15.1 cm)  
**Weight:** .....0.95 lb. (.43 kg)

©2002 Honeywell International Inc.  
05/02 006-18270-0001 10K Printed in USA

**Policy Notice:** Avionics installations require special skills, tools and test equipment. Our limited warranty is valid only for equipment installed in accordance with our sales and service policies.

In keeping with our policy of continual product improvement, designs and specifications may be altered without notice.

**Honeywell**  
 23500 W. 105th Street, Olathe, KS 66061-1950  
 Telephone 913.712.2613 Fax 913.712.5697  
 Toll-Free in U.S. 877.712.2386  
[www.bendixking.com](http://www.bendixking.com)  
[bendix.king@honeywell.com](mailto:bendix.king@honeywell.com)

***BENDIX/KING®***  
***EQUIPPED WITH CONFIDENCE.***