

KMD 150

Bendix/King
Color Multifunction
Display/GPS



KMD150

Designed specifically to complement the Silver Crown Plus series, the Bendix/King KMD 150 provides an unmatched combination of affordable multifunction display capability and GPS navigation. (Shown actual size)



Offering improved ergonomics, our entire matching line of Silver Crown Plus avionics features extensive control backlighting and sturdier buttons for greater precision.

The Value of Information

Offering a unique combination of increased situational awareness, enhanced safety and wide-ranging capability, the new KMD 150 Color Multifunction Display/GPS gives you big-screen performance in a package that fits your panel—and your budget.

Designed specifically for use in piston-powered and light turbine aircraft, the KMD 150 features a high-resolution color display, a safety-enhancing terrain database, the capacity to display GPS navigation and a variety of aeronautical and cartographic information simultaneously, an easy-to-use joystick controller, and newly implemented Victor Airways. In short, the new KMD 150 offers a unique combination of performance and value.



With perhaps the most pilot-friendly operating system available, the KMD 150 gives you information about such map elements as airports (shown above, left) by selecting the element with the mouse-like joystick and pressing the "More Info" button. The resulting screen (above, center) even includes a runway diagram, along with frequencies, and field elevation. Additional information (above, right), is accessed in the same, easy-to-remember way.

A Better View...

With its big, 5" diagonal screen, the KMD 150 presents a broad coverage area, making flying easier and more convenient. Combining Jeppesen® aeronautical data, cartographic mapping and GPS navigation information, the KMD 150 shows you everything from flight plans to waypoints and airports, NDBs, intersections, VORs, special-use airspace, rivers, roads, lakes, cities, railroad tracks and towers, terrain elevation and WX-500 Stormscope® data. Its database can also be customized, enabling you to view the specific information you want to see, at the map ranges you want to use. There's even a handy de-clutter feature that, at the pilot's option, removes detail as you zoom out, and remembers your preferences for future reference.

In addition, the KMD 150 is available either with or without a built-in GPS receiver. Thus, the system can function as a stand-alone VFR navigator, or it can serve as a supplement to your current GPS or Loran receiver (including our own KLN 89B, KLN 90B and KLN 94 GPS, or KLN 88 Loran). Either way, its high-resolution screen lets you take full advantage of your moving-map capability.

...That's Easy To Use

To access all its advanced capabilities, the KMD 150 features an advanced graphical interface, complete with menu-driven, easy-to-use software.

Operation is as easy as point and click with the intuitive, mouse-like joystick controller. The joystick lets you move the on-screen cursor at will, to select screen features or highlight elements like waypoints, controlled airspace and airports. With the touch of a button, the KMD 150 lets you call up more information. For example, positioning the cursor over an airport symbol and pressing the 'More Info' button provides frequencies, lighting, even runway diagrams—all on a single screen, without changing pages or dialing in complicated codes.

The KMD 150 is also available with a separate North American database that incorporates Victor Airways and obstacles, or a European database that includes non-ICAO fields and visual reporting points. Four language options—French, Spanish, German and English—give the KMD 150 worldwide applicability.

Part of our Bendix/King Silver Crown Plus avionics series, the KMD 150 offers all the quality, convenience and value you expect from the world leader in avionics systems. With its wide viewing angle, pilot-friendly operating system, context-sensitive on-screen help function and excellent sunlight readability, the KMD 150 presents navigation information clearly and colorfully.

Leading the way into the next generation of panel-mounted avionics, the KMD 150 is the affordable choice in multifunction displays.



A powerful MFD, the KMD 150 adds color and enhanced situational awareness to existing GPS installations.



As a stand-alone unit, the KMD 150 integrates GPS navigation with situational awareness. Presentation options include a pilot-selectable large-text feature, shown here against the background of a high-resolution topographical map.

Navigating Your Way: IFR/BRNAV Flying

To use the KMD 150 as a powerful MFD, simply connect the unit to any IFR-certified GPS. Instantly, you gain a color, big-screen display that's driven by your existing GPS, enabling you to add capability without increasing pilot workload—and without a learning curve.

The photo above shows the KMD 150 used purely as a display that reads the NAV route from the primary GPS and presents it on a map. Complemented with Stormscope WX-500 input, the KMD 150 can even add weather overlays to the navigation track.

The KMD 150 can also provide supplemental information, such as showing a CDI display (GPS version) and en route navigation data without interrupting the operation of your primary GPS. Ideal for a number of different missions, the KMD 150 offers enhanced situational awareness during approaches and other high-workload conditions. And you can install the system with an optional internal GPS sensor, for added redundancy.



The Value of Color

While the KMD 150's multifunction capability may be its most outstanding attribute, its bright, colorful screen is equally appealing. Highly readable—even in direct sunlight—its big (5" diagonal) liquid crystal display literally transforms your cockpit.

But the KMD 150's color isn't just for show. By featuring a color display, the KMD 150 helps organize and prioritize information, conveying it in a way that speeds your recognition of critical flight data. For example, such critical information as lightning strikes are presented in red, to catch your attention, while the aircraft's track is depicted in magenta. By color-coding data in this manner, you can focus on the items most critical to your current situation, requiring less effort.

There's an additional benefit, too. Enabling you to concentrate on each task and complete it more quickly, the KMD 150 allows you to spend more time looking outside, and less time looking down at your panel. And that helps make flying both safer and more enjoyable.

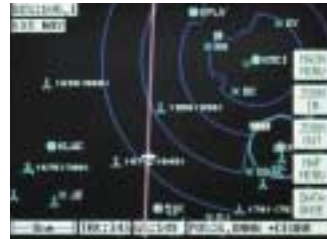
EASY TO INSTALL

The single-box KMD 150 installs in your avionics stack with the following connections:

- Serial RS232
- 10-28VDC Power In
- WX-500 Stormscope

Attach the GPS antenna and you've got an unprecedented degree of NAV mapping capability and situational awareness.

NOTE: For specific operating information, consult the Pilot's Guide.



Offering a host of capabilities, the KMD 150 gives you a wide range of pilot-selectable features, such as (l. to r.) heliports and heliroutes; Stormscope overlays; a topo-off mode; and Victor Airways, which are configurable by map range.

Database/Display Capabilities

Arguably its most attractive aspect, the KMD 150's big color display shows you a wealth of database and navigation information. Here are some of its many useful features:

- Terrain Contouring
- Roads and Railways
- Rivers, Lakes and Coastlines
- Visual Reporting Points
- Non-ICAO Fields
- Victor Airways
- KLN 89/90/94 Interface
- City Heliroutes
- Obstacle Database
- All Classes Airspace
- MIL and MATZ Zones
- Auto Declutter
- WX-500 Stormscope data
- Icon Interrogate Mode
- HSI/Autopilot Coupling
- Spanish, French, German and English language options

Advanced-Technology Features

Offering a comprehensive list of pilot-friendly features, the KMD 150 is also packed with value. Here's a summary of its key capabilities:

- Color MFD/GPS moving map for enhanced situational awareness
- Available without an internal GPS unit for use with existing GPS/Loran units
- High-resolution, color TFT active-matrix display
- Outstanding sunlight readability with wide viewing angle
- Customizable Jeppesen® aeronautical database (see sidebar "GPS Database/Display Capabilities")
- Enhanced cartographic database (see sidebar "GPS Database/Display Capabilities")
- Regional topographical/elevation information (see sidebar "GPS Database/Display Capabilities")
- High-speed, high-capacity front-loading PCMCIA data card
- 'North-up' and 'track-up' operation
- Intuitive, easy-to-use soft-key operating system
- Unique joystick control for data entry and "more information" feature
- On-screen "Help"
- Autopilot interface
- Incorporates E6B calculator function for density altitude, trip planning and fuel planning
- Multilingual capability offers English, French, Spanish and German, along with on-screen airport listings in either plain language or ICAO code

KMD 150 Specifications

Width:	6.2 in. (15.8 cm)
Height:	4.0 in. (10.1 cm)
Depth:	6.9 in. (17.5 cm)
Weight:	3.3 lbs. (1.75 kg) (including rack and data card)
Screen Size:	5" (12.7 cm) diagonal
Temperature Range:	-20°C to +55°C (continuous)
Power Input:	10-33VDC (15W max.)
Mounting:	Rack-mounted
Antenna:	KA 92, 26.5dB gain low-profile
Max. altitude:	25,000 feet
Humidity:	95% non-condensing
Environmental Standard:	RTCA DO 160C B1VBA[MN]XXXXXXZBBBBUBXXX
GPS Receiver architecture:	8-channel parallel
Response time to first fix:	12 sec. (almanac, position, time and ephemeris known); 45 sec. (almanac, position & time known); 15 min. (nothing known); 1.5 sec. (reacquire)

Internal Database

Geographical Elements:	Coastlines, cities, major towns, urban areas, railroads, roads, lakes and rivers
Topographical Elements:	Digital Terrain Elevation Data (DTED) published by the National Imaging and Mapping Agency (NIMA), a part of the United States Geological Survey (USGS)
Aeronautical Elements:	ARINC 424 Format VORs, NDBs, airfields, runway information and graphics, communicating frequencies, airways intersections, danger areas and upper/lower controlled airspace limits (Jeppesen®)
User Waypoints*:	500 user waypoints and up to 25 user configurable airfields
Routes*:	Up to 99 reversible routes, each with up to 99 waypoints

*GPS version only

Interfaces

Inputs:	External GPS, requires ARNAV R-30, BendixKing RS232 or RS422 (9600 baud), NMEA0183 (4800 or 9600 baud) or Northstar Proprietary data (1200 baud); WX-500 Stormscope sensor
Outputs:	To/From Flag, CDI Bar, NAV Flag, NAV superflag, WPT annunciator, message annunciator, RS232/NMEA/WX-500 Stormscope control output, audio annunciator output

Approvals

FAA:	PMA Approval No. PQ3407CE, Cessna 182S and Mooney M20M/R/S
CAA:	Approval LA301065 (limited to a maximum weight of 5,700 kg)

The Best Products, The Best Support

Like all Bendix/King avionics, the KMD 150 is backed by our comprehensive two-year “no hassle” warranty. And it’s supported by more than 800 authorized service centers worldwide—the most extensive and capable network in general aviation.

©2000 Honeywell
4/00 006-18248-0000 5K Printed in USA

Policy Notice: Avionics installations require special skills, tools and test equipment. Our limited warranty is valid only for equipment installed in accordance with our sales and service policies. In keeping with our policy of continuous product improvement, designs and specifications may be altered without notice.

BENDIX/KING

Honeywell
23500 W. 105th Street, Olathe, KS 66061
Telephone 913.712.2613 Fax 913.712.5697
Toll-Free in U.S. 877.712.2386
www.bendixking.com

5 The Old Granary, Boxgrove,
Chichester West Sussex
PO18 0ES United Kingdom
Telephone +44.1243.783763
Fax +44.1243.783992